



**HEALTHY
ECOSYSTEMS**



**HEALTHY
COMMUNITIES**

HEHC NATURAL RESOURCE ASSESSMENT

Infrastructure

Infrastructure resources important to a healthy community

A community's infrastructure is made up of all the "built" structures and facilities that make it possible for a community to function and sustain itself and make the community an attractive place to live. A city's phone and Internet services, schools and hospitals, housing, parks and recreational facilities, and fire and emergency preparedness system are basic resources critical to the health and welfare of a community and its citizens .

All of these built assets play an important part in the community's ability to sustain businesses and support growth. Indeed, infrastructure is key to the long-term outlook of any community and, as a result, is considered a vital community asset.

A community's infrastructure is often overlooked when considering the health of the local ecosystems and water resources. Street drainage systems—their condition and how they are maintained are very important to surface water quality. And the condition of parks and other public grounds can impact storm water drainage, erosion, and groundwater replenishment systems.

The purpose of this assessment is to help you evaluate the status and needs of your community's infrastructure. While your answers present your view of the community's infrastructure assets, strive to represent the larger community views and perspectives of these resources. It will be especially valuable to seek input from local experts—your community's utility managers or maintenance teams.

There are no right or wrong answers, and there is no required amount of time or effort for deciding when the assessment is complete. The effort you put into this assessment is up to you. However, the more detailed your answers are, the more valuable it will be as a tool for economic development, natural resource planning, and infrastructure development.

**Built assets are
important to the
health and welfare
of your
community, and its
ability to support
growth.**

Infrastructure Assessment

Name of community: _____

Describe the boundaries your community has established for your HEHC assessments: _____

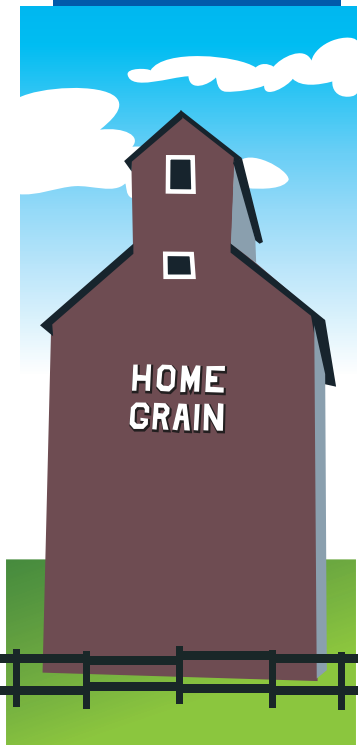
Instructions

1. Boundaries should be consistent for all assessments.
2. Some of the questions are “walk about” in nature--meaning that they can be answered by observation of what is easily identified in your community. Other questions may require some exploration. Internet resources and agency information are provided for questions when available. Your assessment team may want to invite agency representatives to conduct presentations, evaluations, or field trips in your community to expand the learning experience for students and adults not participating in your HEHC program. Some questions may benefit from the historic perspective of long-time residents or can be answered by a local hobbyist who has extensive knowledge in this resource area.
3. Attachments, supporting materials, and other information should be included with your assessment--remember--this report is for your community so include information you think is important.
4. Your answers can be hand-written into this form, or typed into an electronic file for the final planning document.
5. If assessment team members are using separate forms, their answers or input should be consolidated on one “final” report in order to capture all of the information the team has gathered.

NOTE: Completed assessments will be given to the HEHC coordinator to prepare the final planning document for your community’s HEHC program work.

Some information (such as local land uses) may have been prepared especially for your community’s assessment. Contact information for the organizations which prepared this information are referenced in case you have further questions.

Space is provided for additional questions you think are important to know about this resource. In addition, space is provided for your ideas or suggestions to preserve, protect, or restore special resources, and for ideas which would create sustainable educational, recreational, and/or economic opportunities for this resource in your community.



Let's begin . . .

Sidewalks and Roads Evaluations:

1a. What percent of roads are paved? Describe condition:

1b. What percent of roads are gravel, dirt, or asphalt millings? Describe condition:

2. Does your community have prominent signage on roads and highways surrounding the community? Describe location.

3a. What is the condition and availability of sidewalks in your community?

Information Resource(s):

- Sidewalk Design Guidelines and Existing Practices
<http://www.fhwa.dot.gov/environment/sidewalks/chap4b.htm>

3b. Are improvements needed? Describe.

3c. Are sidewalks handicap accessible, meeting federal ADA guidelines? List those that need work to meet guidelines.



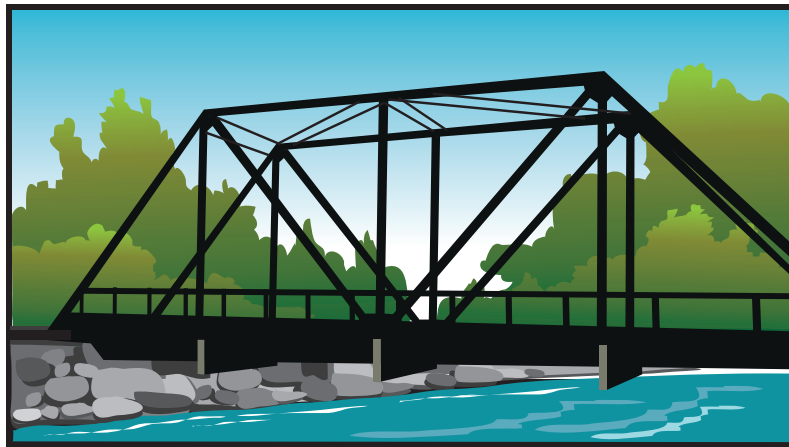
Information Resource(s):

- A Checklist for Accessible Sidewalks and Street Crossings:
http://www.walkinginfo.org/pdf/accessible_sidewalks_crossings.pdf

4. How safe and easy is it to get around in your community on foot or bicycle?

5a. Does your community have clearly marked crosswalks in higher traffic areas?

(See Resouce on #3c)



5b. Describe opportunities for improvement:

Drinking water evaluation

7. Public drinking water systems are required to meet federally-mandated minimum standards for contaminants. Has your water exceeded federal levels for contaminants in the past year? If so, what contaminants were in violation, and how often?

Information Resource(s):

- Rural water district's water quality report which can be obtained by calling your local water supplier or rural water district contacts
<http://www.krwa.net/directory/default.asp>
- EPA list of maximum contaminant levels (MCLs) allowed in public drinking water
<http://www.epa.gov/safewater/contaminants/index.html#listmcl>

8a. Does your community's drinking water treatment, storage, and delivery system meet the needs of the current population?

8b. Is there capacity for future growth in the drinking water system?

9a. Are there residences in your community that have private wells and is there a community program to encourage homeowners to test their water periodically for contaminants?

10. What is the capacity and age of your community's water supply mains, and what condition are they in?

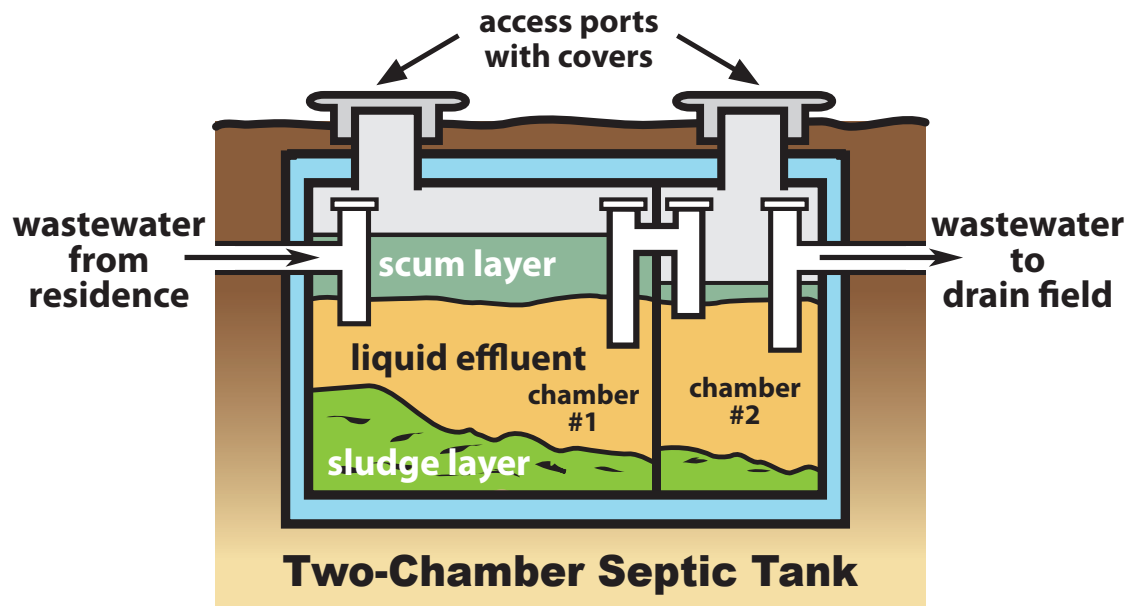
11. Given your findings, are any areas of your community's drinking water treatment and storage systems in need of repair or development? Describe

Sanitary wastewater treatment system evaluation

12. Describe the condition and capacity of your community's sanitary wastewater collection system and wastewater treatment facilities:

Information Resource(s):

- KDHE Wastewater Options for Small Communities in Kansas:
http://www.kdheks.gov/nps/ww_options_manual/index.html
- National Small Flows Clearinghouse, Waste Water and Onsite Treatment Systems
http://www.nesc.wvu.edu/nsfc/nsfc_index.htm



13. How many homeowners have septic systems? Are citizens encouraged to practice proper maintenance and clean-out schedules?

Information Resource(s):

- Natural Resource Conservation Service Fact Sheets for onsite septic systems, cisterns, waste water ponds
http://www.ks.nrcs.usda.gov/technical/tech_notes/evt4.html

14. If your community has a wastewater treatment plant where does the treated water get discharged to?

15. If your community has wastewater lagoons, are they discharging or non-discharging? If discharging- where do they discharge to?

16. Has the wastewater treatment system exceeded its permitted discharge limits in the last year?

17. Does your wastewater treatment system meet current demands? Future demands?

18. Describe your storm water drainage system. Using a map show how storm-water flows through the community and identify problem drainage areas.

19. Does storm water ever overflow into the wastewater lagoons or treatment plant?

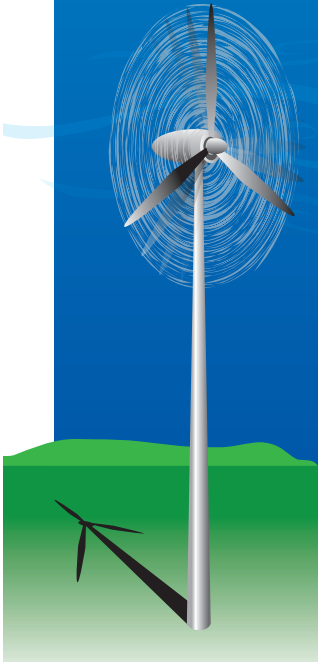
20. Given your findings, are any areas of your community's sanitary wastewater treatment system or stormwater drainage system in need of repair or development? Describe.

Energy, housing, public spaces and services evaluations:

21. Is natural gas available to all homes in your community?

22. What's the source of electricity for your community and is there an alternate electrical service available for emergencies? How is the alternate electrical supply activated?

23. Are there adequate public/private spaces available for public activities and events?



HEHC Infrastructure Assessment

24. How does your community use these spaces?

25. Are there buildings sufficient to sustain current businesses and/or attract new business? If no, please explain needs.

26. Are business infrastructure and services sufficient to sustain current businesses and/or attract new business? Please explain needs:

27 List and describe public parks and community recreational facilities in your community.

28. Are there additional recreational needs or facilities your community would like to have?

29. Is current housing in the community sufficient to support the housing needs?

_____ Yes _____ No

What types of housing is needed to meet current demands?



30. Is land available for housing development?

_____ Yes _____ No

If not, please describe land needs.

31. Are communication services and infrastructure sufficient to meet current demand?

_____ Yes _____ No

Information Resource(s):

- Best Practices for Supporting Internet and Development Initiatives
<http://www.fao.org/docrep/w6840e/w6840e06.htm>

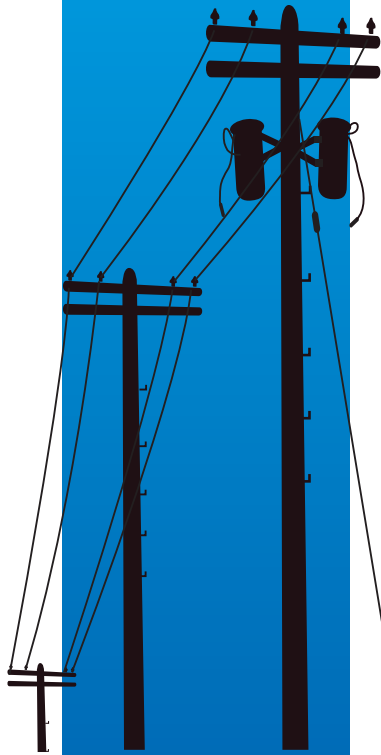
If no, what kinds of communication services are needed?

32. Describe the trash collection and recycling services in your community; are the services public or private?

33. How is your community's household hazardous waste collected for disposal?

34. Is recycling available in your community? Who provides these services?

_____ Yes _____ No



35. Describe the availability of emergency shelter facilities and alert systems in your community.

Information Resource(s):

- Centers for Disease Control and Prevention (emergency response)
<http://www.bt.cdc.gov/>
- Kansas Emergency Management
<http://www.accesskansas.org/kdem/>

Alert systems:

List locations and capacities of emergency shelters:

36. Are alert systems adequate and in working order? Are improvements needed?

37. Do you have adequate local fire, ambulance, and medical services? If not, describe needs.

38. Describe your community's access to air, rail, or bus services (if applicable.)



Appendices for Infrastructure Assessment

Appendix A: Website information resources

1. A Checklist for Accessible Sidewalks and Street Crossings:
<http://www.walkinginfo.org/library/details.cfm?id=67>
2. Sidewalk Design Guidelines and Existing Practices
<http://www.fhwa.dot.gov/environment/sidewalks/chap4b.htm>
3. National Small Flows Clearinghouse, Waste Water and Onsite Treatment Systems
http://www.nesc.wvu.edu/nsfc/nsfc_index.htm
4. Best Practices for Supporting Internet and Development Initiatives
<http://www.fao.org/docrep/w6840e/w6840e06.htm>
5. Design Principles for Parking Lots
<http://www.tvaed.com/sustainable/parking.htm#edges>
6. Porous Parking Lot Cuts Down on Runoff
<http://www.uswaternews.com/archives/arcquality/3porpar5.html>
7. Trail Design for Access
<http://www.fhwa.dot.gov/environment/sidewalks/chap5a.htm>
8. Centers for Disease Control and Prevention (emergency response)
<http://www.bt.cdc.gov/>
9. Kansas Emergency Management
<http://www.accesskansas.org/kdem/>

Appendix B: Agency Resources

1. U.S. Department of Transportation—Accommodating Bicycle and Pedestrian Traffic:
<http://www.fhwa.dot.gov/environment/bikeped/Design.htm>
2. EPA Drinking Water Standards:
<http://epa.gov/safewater/mcl.html>
3. EPA Clean Water Act:
<http://www.epa.gov/owow/watershed/wacademy/acad2000/cwa/>

4. KDHE Wastewater Options for Small Communities in Kansas:
http://www.kdheks.gov/nps/ww_options_manual/index.html
5. Kansas Department of Commerce:
<http://www.kansascommerce.com>
6. Kansas PRIDE Program
<http://www.kansasprideprogram.ksu.edu/PRIDE/welcome.htm>

Appendix C: Funding Resources

1. USDA Rural Development—Water and Environmental Programs and Grants:
<http://www.usda.gov/rus/water/program.htm>
2. USDA Water and Waste Program Grants:
<http://www.usda.gov/rus/water/programs.htm>
3. U.S. Department of Education Discretionary Grant Applications:
<http://www.ed.gov/fund/grant/apply/grantapps/index.html>
4. Bikesbelong.org Grants:
<http://www.bikesbelong.org/grants>
5. Kansas Wildlife and Parks Trails Grants:
http://www.kdwp.state.ks.us/news/kdwp_info/grants
6. Kansas Department of Commerce Community Development Block Grants:
<http://www.kansascommerce.com/Communities/CDBGprogram/tabid/166/Default.aspx>
7. Community Emergency Response Team Grants:
http://ric.nal.usda.gov/nal_display/index.php?info_center=5&tax_level=1&tax_subject=578